

The logo features the letters 'UX' in a large, bold, sans-serif font. The 'U' is dark blue and the 'X' is orange. To the right of 'UX', the word 'iship' is written in a smaller, dark blue, lowercase sans-serif font. The entire logo is set against a white background with a subtle blue and orange gradient. The logo is framed by a white rounded rectangle with a blue border, which is itself set against a background of overlapping circles and lines in shades of blue and orange.

**UX** iship

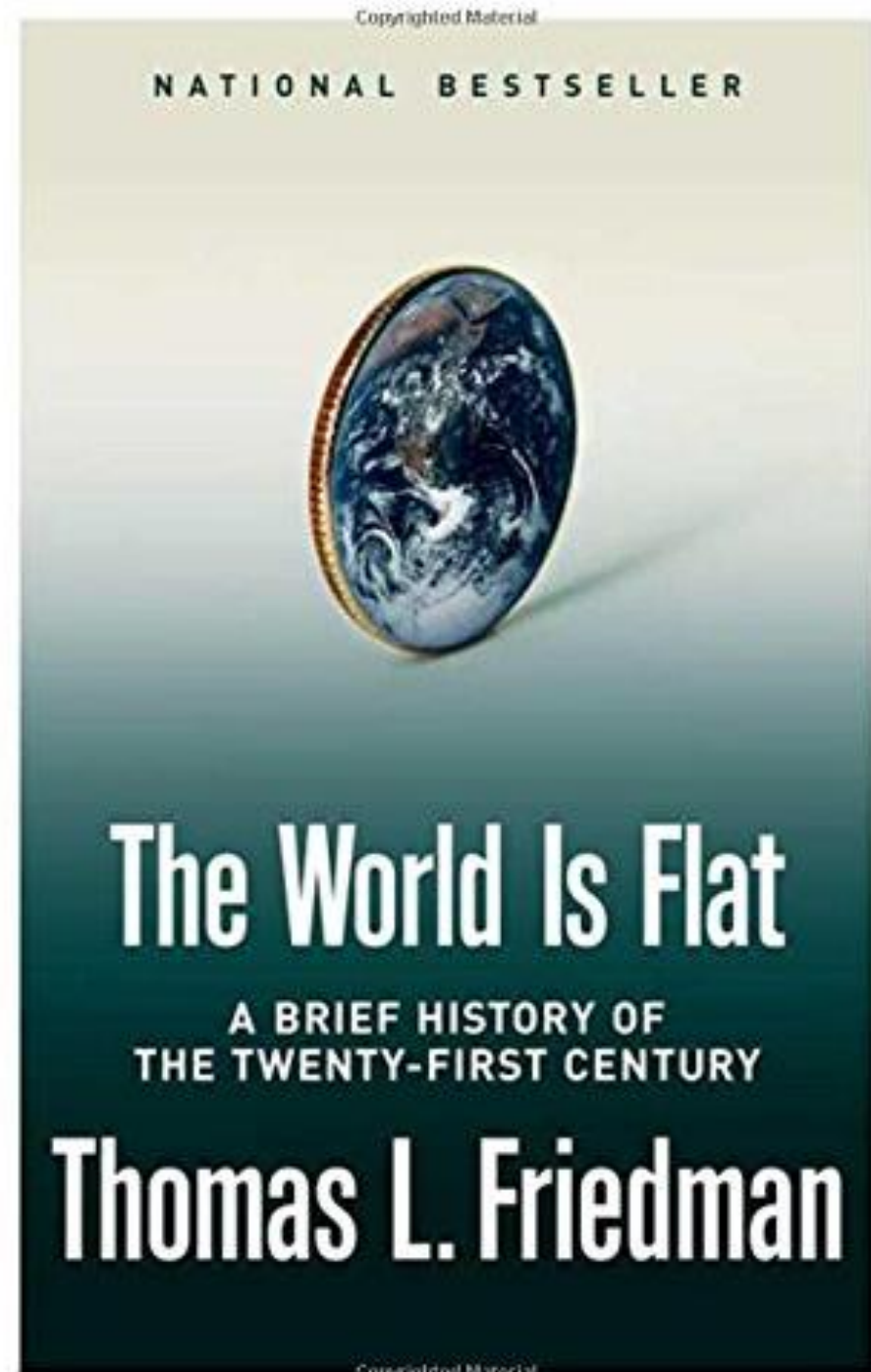
# Contemporary Business Models

Edgars Čerkovskis

EKA University of Applied  
Sciences

# The World Is Flat

- Summary. In his book *The World Is Flat*, Friedman recounts a journey to Bangalore, India, when he realized globalization has changed core economic concepts. In his opinion, that flattening is a product of the convergence of the personal computer with fiber optic microcable with the rise of work flow software.



# E-Commerce Industry 2021

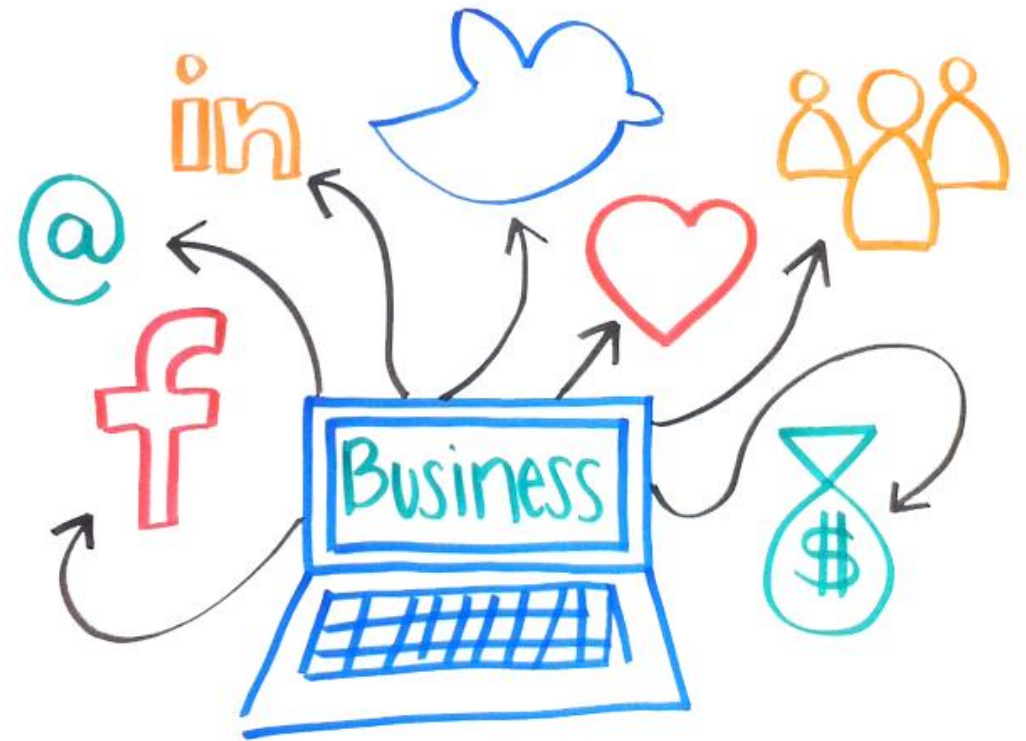
---

- E-commerce (electronic commerce) is the buying and selling of goods and services, or the transmitting of funds or data, over an electronic network, primarily the internet. These business transactions occur either as business-to-business (B2B), business-to-consumer (B2C), consumer-to-consumer or consumer-to-business.



# Social media has transformed that by:

- Allowing startups to get in front of a targeted group of people virtually
- Changing the way businesses communicate with their audience
- Replacing business cards (which often end up in the trash) by popping up in your audience's feed
- Making it easy for businesses to provide value upfront prior to asking anything from a prospect



# CRYPTOCURRENCY

## Top 10 Great Crypto Business Models to Consider for a Startup!

- Cryptocurrency & Altcoin Development
- Token Development & Exchange (Ethereum)
- Cryptocurrency Exchange /Trading Startups
- Bitcoin Wallet Service Startups
- Bitcoin Forking Startups
- Cryptocurrency MLM Service for Startups
- Decentralized Exchange with Atomic Swaps
- ICO – Initial Coin Offering
- STO – Security Token Offerings
- Private Blockchain Implementation For Business

# Social entrepreneurship

## SOCIAL entrepreneurship



**BUSINESS  
PIONEER**

+



**CHRISTIAN  
PERSPECTIVE**

+



**SOCIAL  
MISSION**

=



**IMPACT FOR THE  
KINGDOM OF GOD**

- A Social Entrepreneur is one who develops, fund and implements solutions to Social, Cultural or Environmental issues. There is always a concept that Social Entrepreneurial firms are non–profit organizations.

# Circular economy

- A circular economy is an economic system of closed loops in which raw materials, components and products lose their value as little as possible, renewable energy sources are used and systems thinking is at the core. In this article we will explain this definition in more detail.

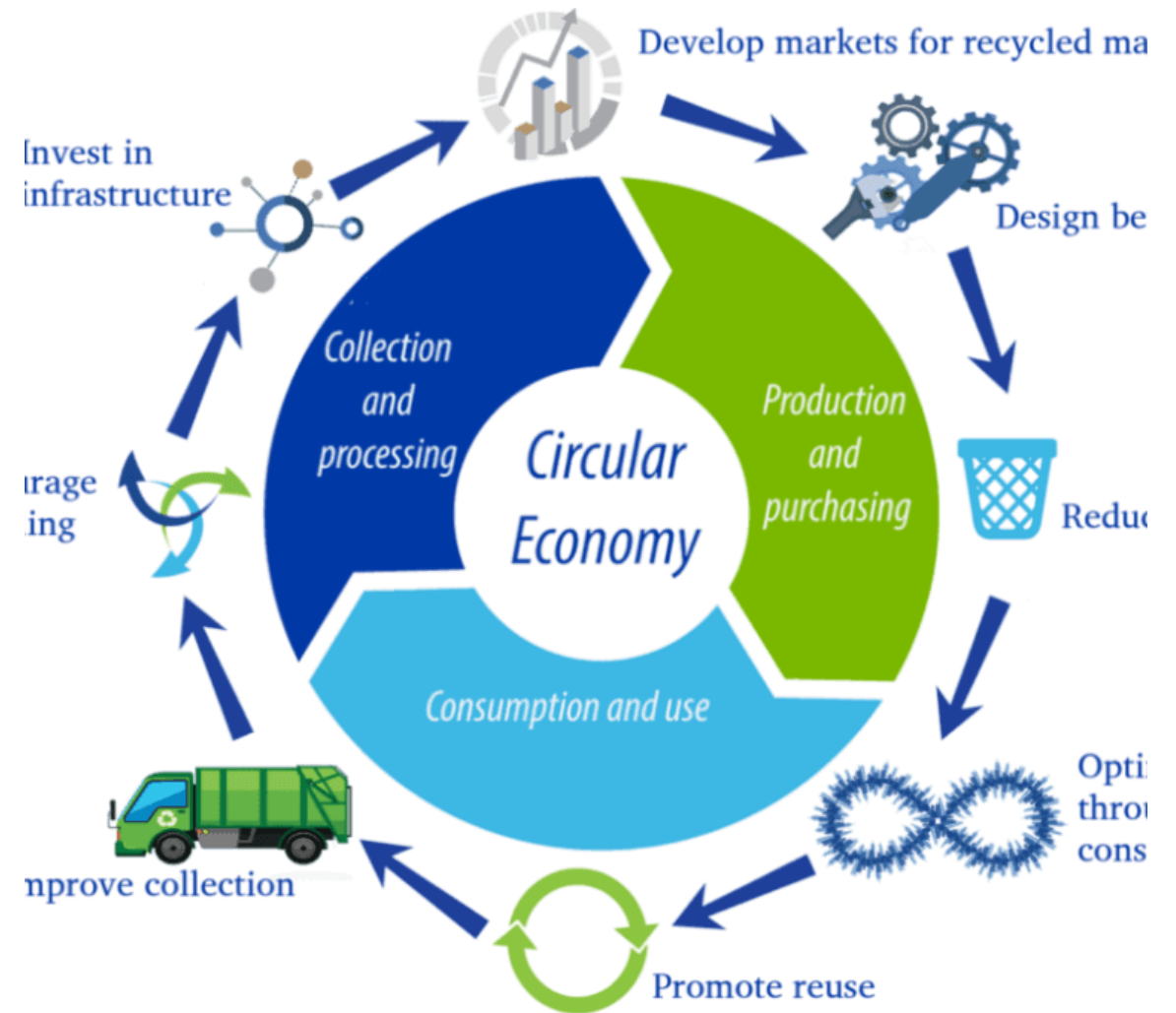


Image: Sustainable Global Recycling Council

## ECO Friendly business

---

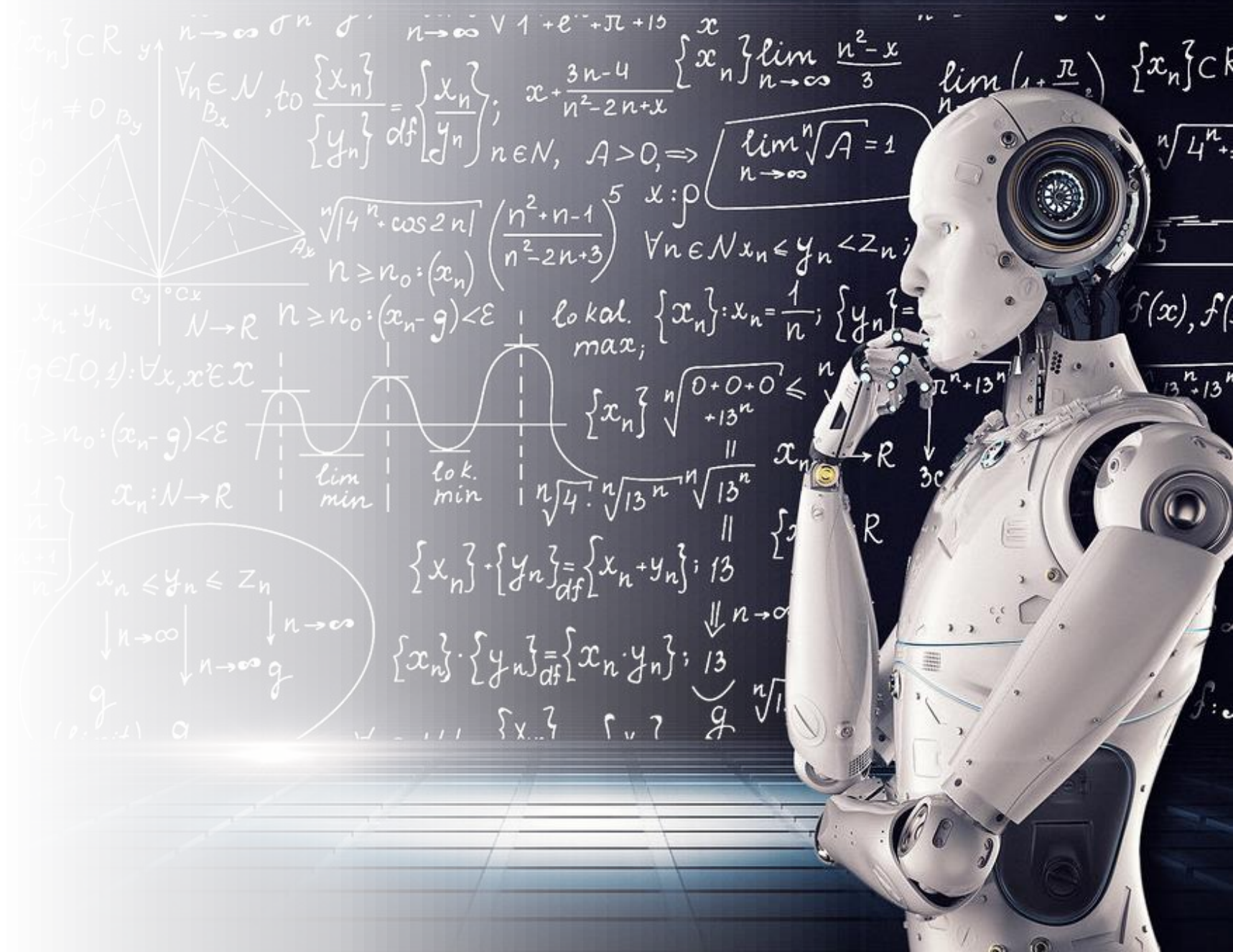
- A green industry business is one that uses sustainable materials to make its products. Green industry businesses aim to use as little water, energy and raw materials as possible while cutting carbon emissions, or it finds ways to utilize these materials in renewable and eco-friendly ways.





# Artificial Intelligence

- the theory and development of computer systems able to perform tasks normally requiring human intelligence, such as visual perception, speech recognition, decision-making, and translation between languages.





## Virtual reality

- Virtual reality (VR) refers to a computer-generated simulation in which a person can interact within an artificial three-dimensional environment using electronic devices, such as special goggles with a screen or gloves fitted with sensors.

The logo features the letters 'UX' in a large, bold, sans-serif font. The 'U' is dark blue and the 'X' is orange. To the right of 'UX', the word 'iship' is written in a smaller, dark blue, lowercase sans-serif font. The entire logo is centered within a white, rounded rectangular shape that has a slight 3D effect with a dark blue shadow on the left and bottom edges. The background of the slide is white with several thin, light gray curved lines and a dashed gray line forming a partial circle around the logo.

**UX** iship

Thank you  
for your  
attention!

Edgars Čerkovskis

EKA University of Applied  
Sciences